

# ADDISON RESERVE PLAT FOUR

PART OF GLENEAGLES/POLO CLUB WEST P.U.D.  
 SITUATE IN SECTION 28, TOWNSHIP 46 SOUTH, RANGE 42 EAST  
 AND BEING A REPLAT OF A PORTION OF "THE PALM BEACH FARMS COMPANY  
 PLAT NO. 1" (P.B. 2, PGS. 26-28), PALM BEACH COUNTY, FLORIDA  
 OCTOBER, 1996 SHEET 4 OF 6

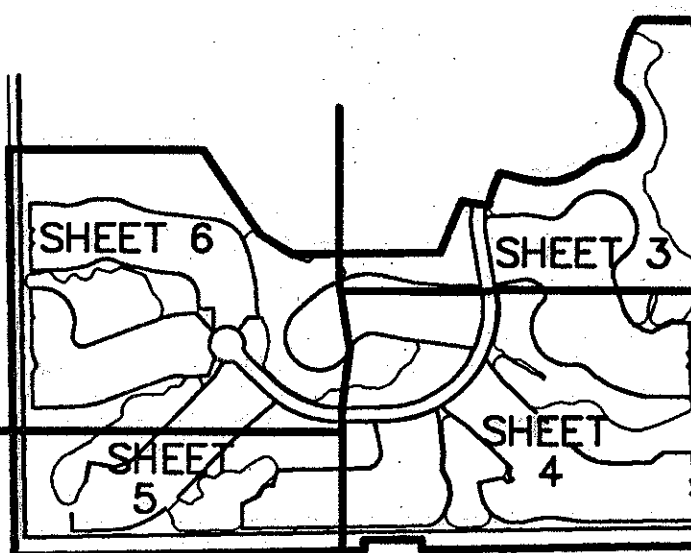
0230-023

79

STATE OF FLORIDA  
 COUNTY OF PALM BEACH  
 THIS PLAT WAS FILED FOR  
 RECORD \_\_\_\_\_ DAY OF  
 AD, 1997 AND DULY RECORDED  
 IN PLAT BOOK \_\_\_\_\_ ON PAGES  
 AND \_\_\_\_\_

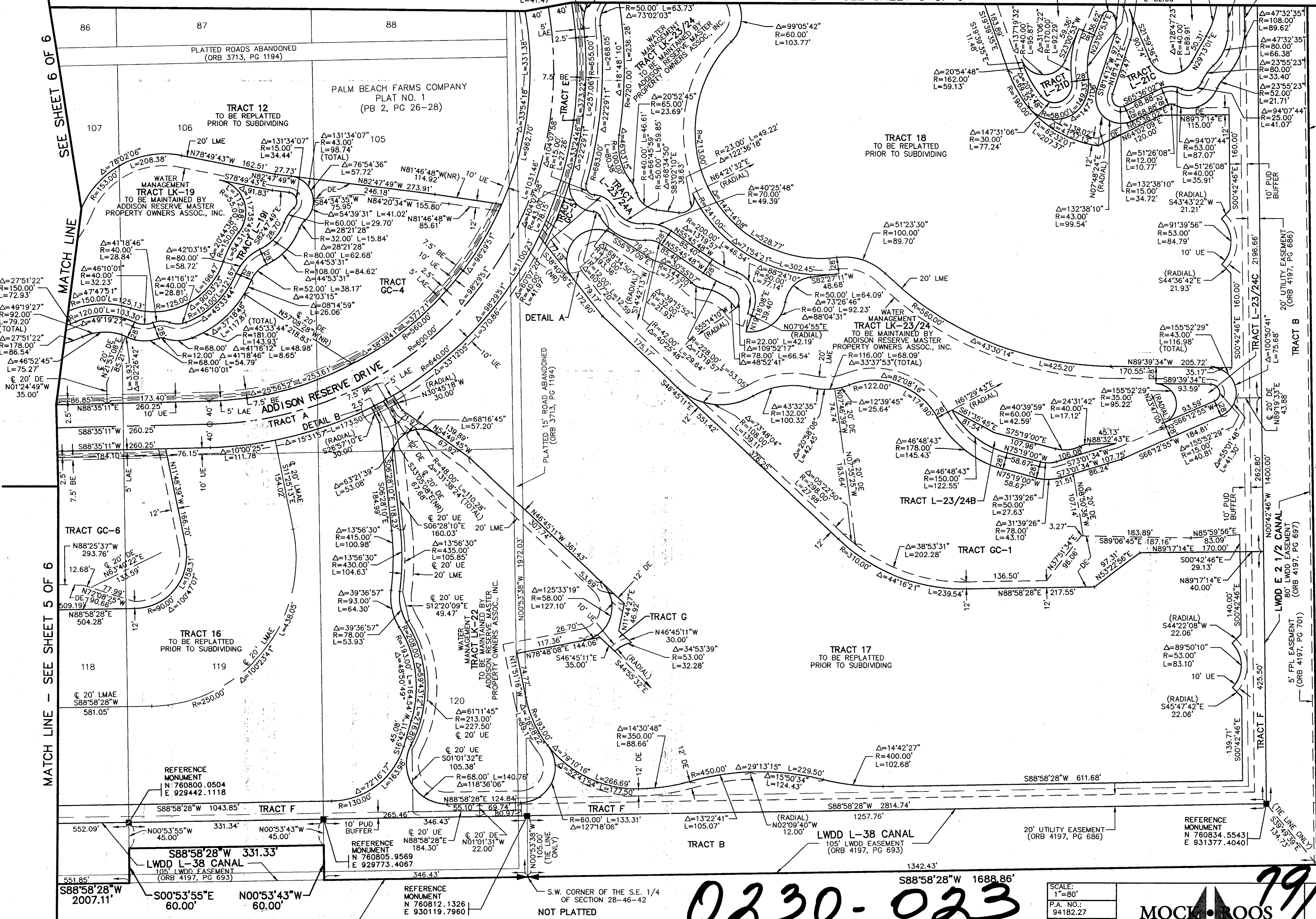
DOROTHY H. WILKEN, CLERK  
 BY: \_\_\_\_\_ D.C.

**Pkt. 80-215**  
 CIRCUIT COURT SEAL



SHEET LOCATION MAP  
 (NOT TO SCALE)

- LEGEND
- BE BUFFER EASEMENT
  - CE CENTRAL (DELTA) ANGLE
  - DE DRAINAGE EASEMENT
  - FPL FLORIDA POWER & LIGHT
  - L ARC LENGTH
  - LAE LIMITED ACCESS EASEMENT
  - LE LANDSCAPE EASEMENT
  - LMAE LAKE MAINTENANCE ACCESS EASEMENT
  - LME LAKE MAINTENANCE EASEMENT
  - LWDD LAKE WORTH DRAINAGE DISTRICT
  - (NR) NON-RADIAL
  - ORB OFFICIAL RECORD BOOK
  - PB PLAT BOOK
  - PG(S) PAGE(S)
  - RF(R) RADIAL
  - UE UTILITY EASEMENT
  - PM PERMANENT REFERENCE MONUMENT
  - FM FOUND PLS# 4763
  - PR PERMANENT REFERENCE MONUMENT
  - SP SET PLS# 4763
  - PC PERMANENT CONTROL POINT
  - SC SET PLS# 4763
  - CL CENTERLINE



SUBDIVISION # \_\_\_\_\_  
 BOOK 79 \_\_\_\_\_  
 PAGE \_\_\_\_\_  
 FLOOD ZONE \_\_\_\_\_  
 QUAD \_\_\_\_\_  
 MORNING RTS/SE \_\_\_\_\_  
 ZIP CODE \_\_\_\_\_  
 PUN NAME \_\_\_\_\_

REV. 01-29-97  
 CAD FILE: TWCADD\ADDIRP23

SOUTH LINE OF SECTION 28,  
 TOWNSHIP 46 S, RANGE 42E

S.W. CORNER OF THE S.E. 1/4  
 OF SECTION 28-46-42

**0230-023**

SCALE:  
 1"=80'  
 P.A. NO.:  
 94182.27  
 DATE:  
 OCTOBER 1996  
 DRAWING NO.  
 46-42-28-115

**MOCK ROOS**  
 ENGINEERS SURVEYORS PLANNERS  
 5720 Corporate Way, West Palm Beach, Florida 33407  
 (407) 683-3113, fax 478-7248

**79/79**

ADDISON RESERVE  
 PLAT FOUR  
 PART OF GLENEAGLES/POLO CLUB WEST P.U.D.  
 SITUATE IN SECTION 28, TOWNSHIP 46 SOUTH, RANGE 42 EAST  
 AND BEING A REPLAT OF A PORTION OF "THE PALM BEACH FARMS  
 COMPANY PLAT NO. 1" (P.B. 2, PGS. 26-28)  
 PALM BEACH COUNTY, FLORIDA